



GENERAL RULES AND ASSEMBLE INSTRUCTIONS
REGOLE GENERALI E ISTRUZIONI DI ASSEMBLAGGIO



ZEN

Create an effortlessly tranquil relaxing ambience
in the bathroom with ZEN series.

Design by Giacomo Zucchi



80702

WASHBASIN WALL MIXER ONE HOLE
MISCELATORE LAVABO INCASSO

80720

SHOWER WALL MIXER
MISCELATORE DOCCIA INCASSO

80721

SHOWER WALL MIXER WITH DIVERTER 2 WAYS
MISCELATORE DOCCIA INCASSO CON DEVIATORE 2 VIE



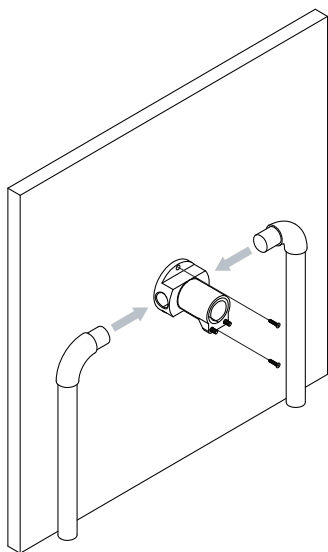


FIND YOUR ZEN

design by Giacomo Zucchi

*“Create an effortlessly
tranquil ambience in the
bathroom with ZEN series”*





01

FIX THE RECESSED BOX TO THE BACK SUPPORT USING TWO SCREWS, THEN CONNECT THE WATER PIPES TO THE MIXER BODY.

FISSARE LA CASSETTA AL SUPPORTO POSTERIORE UTILIZZANDO DUE VITI, QUINDI COLLEGARE I TUBI DI ALIMENTAZIONE ED USCITA DELL'ACQUA.

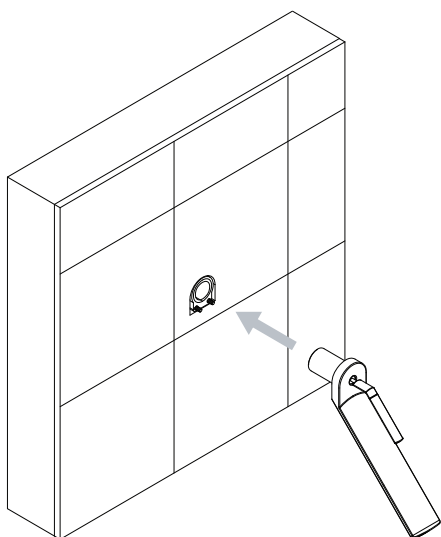
02

COMPLETE THE WALL INCLUDING THE FINISHING LAYER.

THEN INSERT THE SPOUT ASSEMBLY IN THE RECESSED PART AND PUSH IT UNTIL IT REACHES THE WALL.

COMPLETARE LA PARETE INCLUSO LO STRATO DI FINITURA.

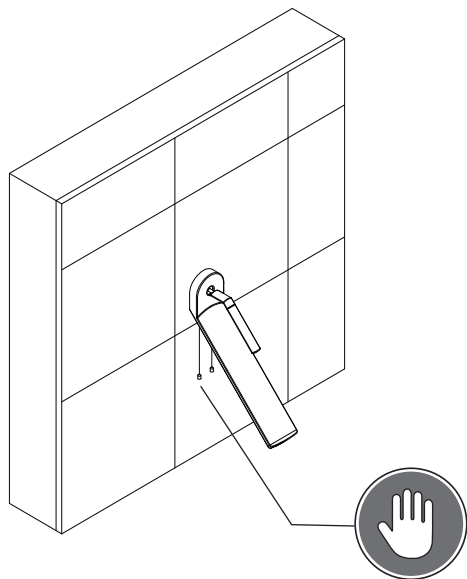
QUINDI INSERIRE LA BOCCA NEL CORPO INCASSO, SPINGENDOLA FINO A RAGGIUNGERE LA PARETE.



CAUTION / ATTENZIONE

BE SURE THAT THE HOLE IN THE WALL IS NOT BIGGER THAN THE SPOUT ASSEMBLY

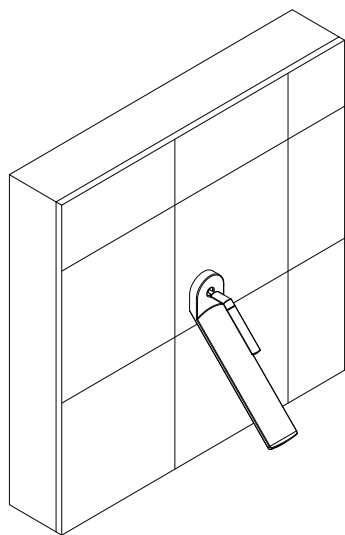
ASSICURARSI CHE IL FORO NELLA PARETE NON SIA PIU' GRANDE DELLA PORZIONE DI BOCCA IN ADERENZA ALLA PARETE STESSA.

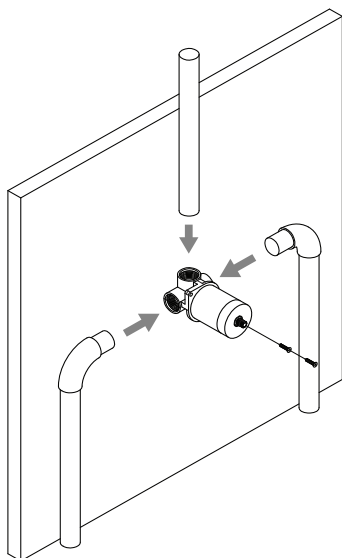


02

FIX THE SPOUT ASSEMBLY BY PUSHING THE TWO PROVIDED CAPS INTO THE HOLES LOCATED UNDER THE SPOUT .

FISSARE LA BOCCA INSERENDO LE DUE SPINE FORNITE NEI FORI POSIZIONATI AL DI SOTTO DELLA BOCCA.

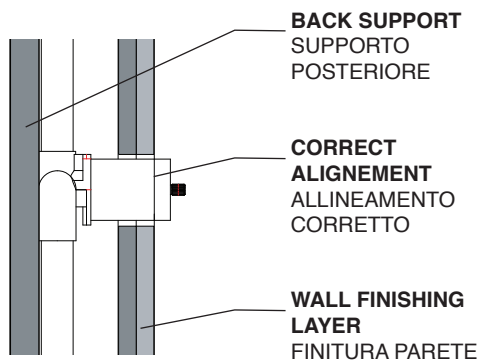




01

FIX THE RECESSED BODY TO THE BACK SUPPORT USING TWO SCREWS, THEN CONNECT THE WATER PIPES TO THE MIXER BODY.

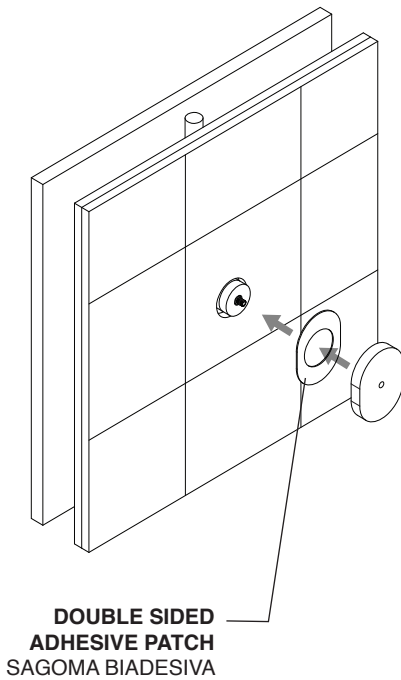
FISSARE LA CASSETTA AL SUPPORTO POSTERIORE UTILIZZANDO QUATTRO VITI, QUINDI COLLEGARE I TUBI DI ALIMENTAZIONE ED USCITA DELL'ACQUA.



⚠ CAUTION / ATTENZIONE

BE SURE THE BODY IS ALIGNED AS SHOWN IN THE FIGURE.

ASSICURARSI CHE IL CORPO SIA ALLINEATO COME MOSTRATO NELLA FIGURA.



02

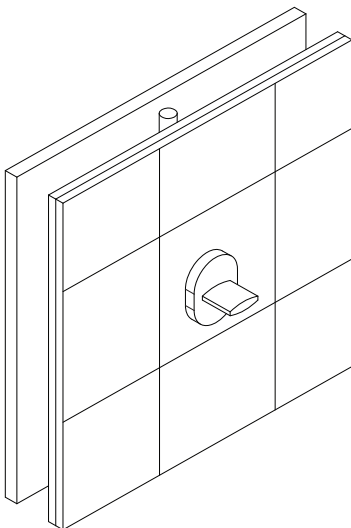
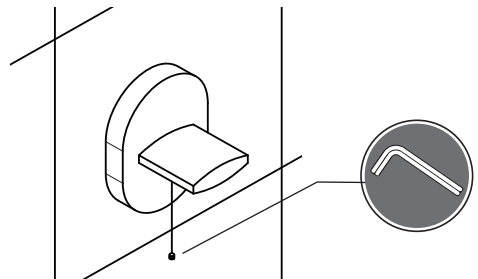
PUT IN PLACE THE DOUBLE SIDED ADHESIVE PATCH AGAINST THE FINISHING LAYER OF THE WALL, AND THE SLIDE IN THE METAL PLATE .

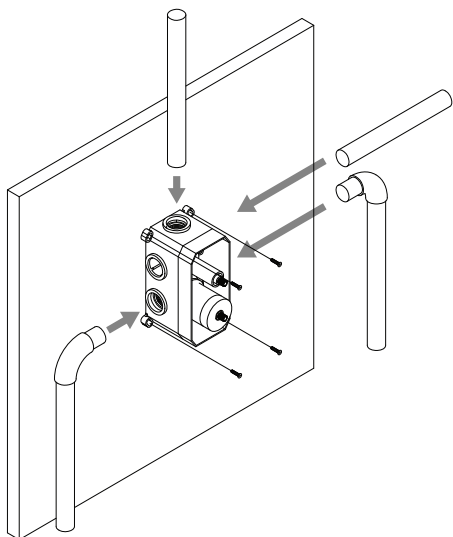
POSIZIONARE LA SAGOMA BIADESIVA SULLO STRATO DI FINITURA DELLA PARETE E, SUCESSIVAMENTE, POSIZIONARE LA PLACCA IN METALLO.

03

SLIDE THE HANDLE ON THE BROACH AND FIX IT USING THE PROVIDED SCREW.

INSERIRE LA MANIGLIA SULLA BROCCIA E FISSARLA UTILIZZANDO IL GRANO FORNITO.

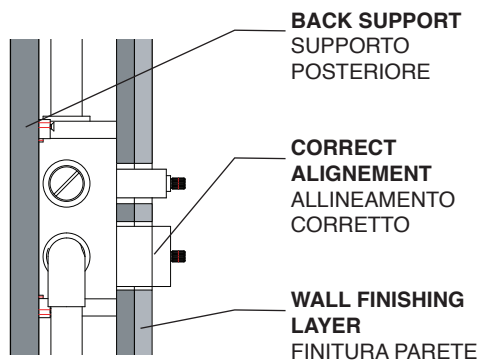




01

FIX THE RECESSED BOX TO THE BACK SUPPORT USING FOUR SCREWS, THEN CONNECT THE WATER PIPES TO THE MIXER BODY.

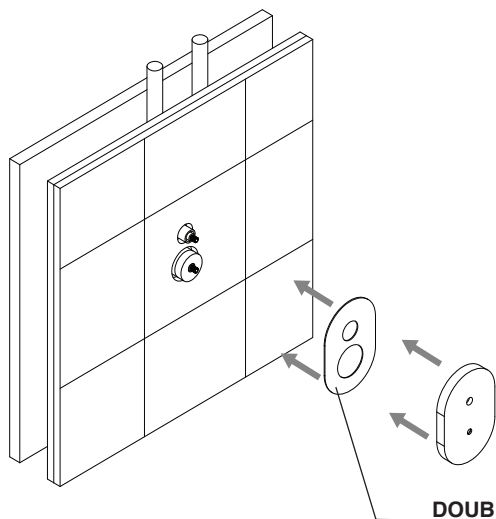
FISSARE LA CASSETTA AL SUPPORTO POSTERIORE UTILIZZANDO QUATTRO VITI, QUINDI COLLEGARE I TUBI DI ALIMENTAZIONE ED USCITA DELL'ACQUA.



CAUTION / ATTENZIONE

**BE SURE THE BODY IS ALIGNED AS SHOWN IN THE FIGURE.
IF NECESSARY, CUT THE PLASTIC BOX TO THE REQUIRED LENGTH**

ASSICURARSI CHE IL CORPO SIA ALLINEATO COME MOSTRATO NELLA FIGURA.
SE NECESSARIO TAGLIARE PARTE DELLA SCATOLA IN PLASTICA

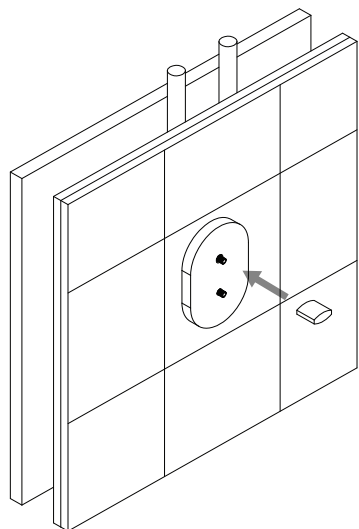


DOUBLE SIDED ADHESIVE PATCH
SAGOMA BIADESIVA

02

PUT IN PLACE THE DOUBLE SIDED ADHESIVE PATCH AGAINST THE FINISHING LAYER OF THE WALL, AND THE SLIDE IN THE METAL PLATE .

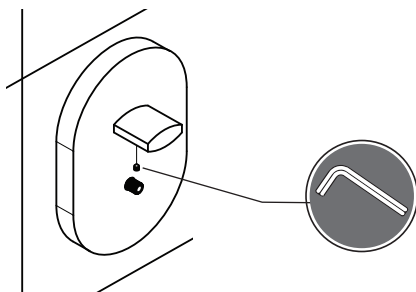
POSIZIONARE LA SAGOMA BIADESIVA SULLO STRATO DI FINITURA DELLA PARETE E, SUCESSIVAMENTE, POSIZIONARE LA PLACCA IN METALLO.

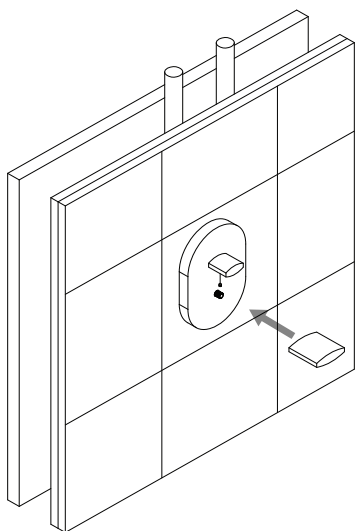


03

SLIDE THE DIVERTER HANDLE (THE SMALLER ONE) ON THE UPPER BROACH AND FIX IT USING THE PROVIDED SCREW.

INSERIRE LA MANIGLIA DEL DEVIATORE (LA PIU'PICCOLA DELLE DUE) SULLA BROCCIA SUPERIORE E FISSARLA UTILIZZANDO IL GRANO FORNITO.

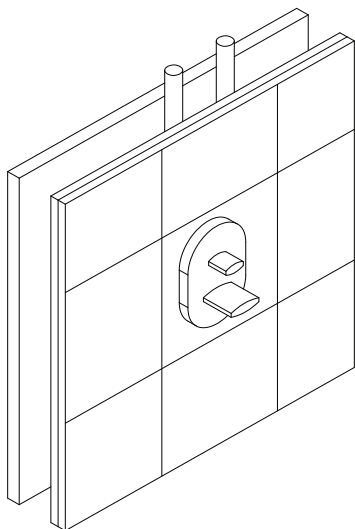
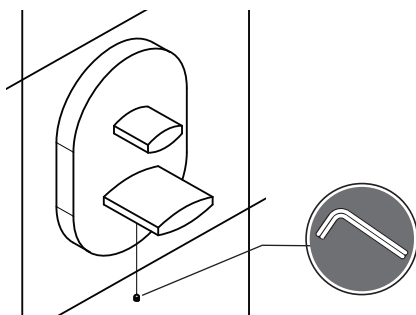


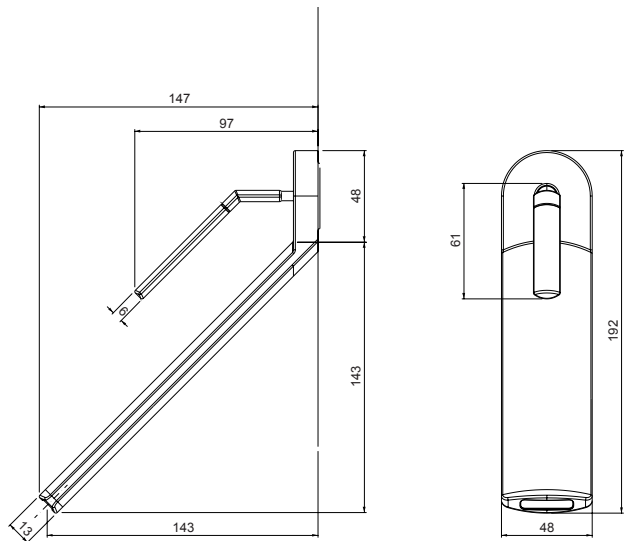


04

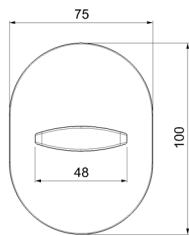
SLIDE THE MIXER HANDLE (THE BIGGER ONE) OVER THE LOWER BROACH AND FIX IT USING THE PROVIDED SCREW.

INSERIRE LA MANIGLIA DEL MISCELATORE (LA PIU' GRANDE DELLE DUE) SULLA BROCCIA INFERIORE E FISSARLA USANDO IL GRANO FORNITO.

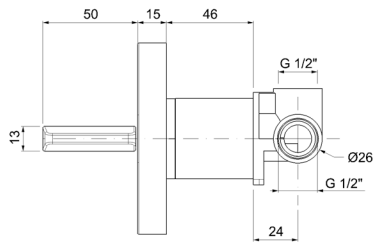




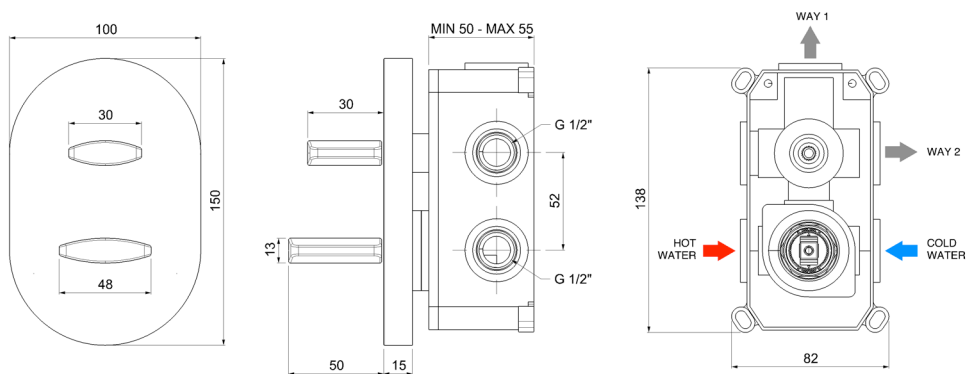
80702



80720



EXPLODED DRAWINGS
DISEGNO ESPLOSO



80721